



Tel: 0086-21-58386256 58386258

Web: <http://www.zenithcrusher.com>

E-mail: [info@zenithcrusher.com](mailto:info@zenithcrusher.com)

## 打造品质 如琢如磨

We pursue the zenith of technology and quality

Add: No.416 Jianye Road, South Jinqiao Area, Pudong New Area,  
Shanghai, China

Fax: 0086-21-58385887

Zip: 201201

We reserve the right of final interpretation of  
the data, subject to change without notice.

Shanghai Zenith Company  
[www.zenithcrusher.com](http://www.zenithcrusher.com)

## Brief Introduction

### 公司简介



现在的总部 Current Headquarter

#### 上海西芝矿山工程机械有限公司

上海西芝矿山工程机械有限公司，是专业从事矿山破碎、磨矿及选矿设备的制造型企业，同时集设备制造、研究、工程设计、安装调试为一体的国际专业化企业。从业20年来，公司凭借可靠的质量和优质的技术服务面向全球市场，产品远销亚、非、美、欧等130多个国家和地区。

#### 生产能力

西芝公司拥有国际一流的生产线和现代化检测基地，产品全部按照ISO9001:2000国际质量认证体系标准进行设计、生产、组装和检测。目前，公司生产的矿山破碎设备、磨矿设备及选矿设备已经广泛应用于黄金、黑色金属、有色金属、非金属等矿物的处理与加工。

#### 经营理念

西芝公司长期坚持“科技与品质同行”的创新型经营理念，依托美国、德国、日本等国家的现今工艺，引进世界一流的生产技术和先进的质量管理体系。公司拥有大量技术专家和相关技术人员，坚持对产品进行改良和创新，不断开发出具有自主知识产权、国际领先的产品。

#### 优秀人才

近年来，公司不断吸纳业内高级管理人才、科研精英及国内外著名高校的优秀毕业生加盟，现已有工商管理硕士(MBA) 13人、高级工程师22人、工程师60人，本科及以上学历的员工占到全体员工的80%以上。公司的技术研发中心有多名享受国务院特殊津贴的著名专家，拥有多项国家技术专利，并已形成了一支团结互助、开拓进取的科研团队，同时与国内知名矿物研究院和设计院合作为企业发展提供着不竭的动力。

#### 至高目标

追求卓越品质、追求客户最大的满意，是全体“西芝人”的至高目标，公司坚持诚信的态度、务实的作风和共赢的目的，愿与广大客户携手共创新的辉煌。

Shanghai Zenith Company is the leading professional manufacturer and solution-provide for mining industry. In the past more than 20 years, bearing the enterprise aim of "Better quality, Better service", Shanghai Zenith has obtained an enviable reputation from the customers over 130 countries and regions all round the world.

Shanghai Zenith is professional in the design and manufacture of crushing equipments, grinding equipments, dressing equipments for mining, quarry and recycling industries. Meanwhile we are working with famous mineral institutes to supply the engineering, installation, commissioning and turn-key service.

Employing over 1300 skilled workers, our company has more than 20 agents abroad. Meanwhile, we passed the certification of ISO9001 and set up an experienced R&D team providing the continuous power to ensure reliable and effective products. New advanced product development plays a vital part in the business philosophy "Pursuing the Zenith of Technology and Quality".

Shanghai Zenith's goal is to become leaders in their respective markets by giving Zenith customers the means to be more productive and profitable for generations to come, coupled with unparalleled customer service, training, education and support.



新总部 New Headquarter (under construction)



## 公司实力 Company Strength

上海西芝连续三年位居行业出口额第一，拥有五大生产基地，目前为中国最大的矿业设备生产基地。  
Shanghai Zenith Group have been the largest manufacturing base of mining equipments in China and has been the best selling among the mining equipments manufacturer in the past 3 years.



|  |   |
|--|---|
| 上海生产中心<br>Manufacturing base in Shanghai | 郑州生产中心<br>Manufacturing Base in Zhengzhou |
| 启东生产中心<br>Manufacturing base in Qidong   |   |



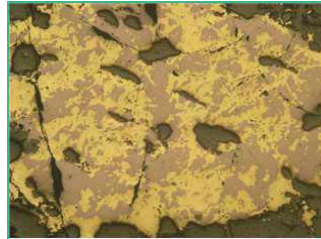
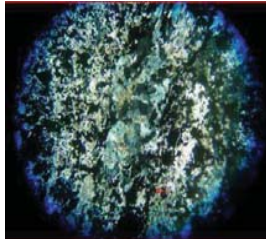
## 技术服务 Technical Services

### 选矿试验

矿物鉴定和化学分析、探索性试验、条件试验、开路 and 闭路试验 确定流程、编制试验报告的。

### Dressing Test

Mineral identification & Chemical analysis test, Exploratory test, Condition test, Open & closed-circuit test, Solution confirmation, Issuing test report.



### 工程设计

选址设计、总图运输、土建设计、电气设计、厂房设计、给排水设计、尾矿排放、自动化设计、连接件设计、加药系统设计。

### Engineering Design

Site design, Transportation solution, Civil Work drawing design, Electrical design, Factory design, Water Supply & drainage design, Tailings discharge, Automation Design, Connecting parts design, Chemical feeding system design.



### 安装调试

我们拥有专业的项目经理及工程师队伍，根据客户要求可以指导客户进行设备安装调试或者派遣施工队伍提供一条龙服务。

### Installation & Commissioning

We have professional project managers and engineer teams to instruct our customers and their workers to do the installation and commissioning work or supply the turn-key service.



### 员工培训

在安装过程中我方技术人员将对于客户的工作人员进行对于设备所需的安装，维修操作等培训。在安装调试完成之后对于客户的员工，按照专业分工合作，做好相关岗位所需的技能培训。

### Personnel Training

Our engineers will instruct customers' staff to do the installation and maintenance work and carry out technical training according to different specialties and relevant positions.



Honors&Certification  
企业荣誉及产品认证

- 1.俄罗斯 GOST 认证 RUSSIAN GOST CERTIFICATE
- 2.CE 认证 EU CE CERTIFICATE
- 3.中国名企 CHINA TOP ENTERPRISE
- 4.ISO 质量认证 ISO QUALITY MANAGEMENT CERTIFICATE
- 5.上海名牌 SHANGHAI FAMOUS BRAND



产品目录  
Contents

|   |    |
|---|----|
| 磨矿设备 Grinding Equipments                                |    |
| 球磨机 Ball Mill   | 1  |
| 分级设备 Classification Equipments                          |    |
| FL 系列螺旋分级机 FL Series Spiral Classifier                  | 5  |
| FX 系列水力旋流器 FX Series Hydro-cyclone                      | 7  |
| 浮选设备 Flotation Equipments                               |    |
| BF 系列浮选机 SF Flotation Cells                             | 9  |
| SF 系列浮选机 BF Flotation Cells                             | 11 |
| XCF/KYF 型浮选机 XCF/KYF Series Flotation Cells             | 13 |
| 磁选设备 Magnetic Separation Equipments                     |    |
| CTL 型永磁干式磁选机 CTL Series Dry Magnetic Separator          | 15 |
| CT 型磁选机 CT Series Magnetic Separator                    | 17 |
| ZGT 型高梯度磁选机 ZGT Series High Gradient Magnetic Separator | 19 |
| 重选设备 Gravity Separation Equipments                      |    |
| JT 型锯齿波跳汰机 JT Series Sawtooth Wave Jigger               | 21 |
| 6S 摇床 6S Series Shaking Table                           | 23 |
| LL 型螺旋溜槽 LL Series Spiral Chute                         | 25 |
| 浓缩设备 Thickening Equipments                              |    |
| NZ(S)型中心传动浓缩机 NZ(S)Series Center Driving Thickener      | 27 |
| NG 型周边传动浓缩机 NG Peripheral Traction Thickener            | 29 |
| GX 型高效浓缩机 GX Series High-efficiency Thickener           | 31 |
| 过滤设备 Filtering Equipments                               |    |
| XAMY 箱式压滤机 XAMY Box Filters Press                       | 33 |
| ZPG 圆盘真空过滤机 ZPG Disk Vacuum Filter                      | 35 |
| ZDU 带式真空过滤机 ZDU Belt belt Vacuum filter                 | 37 |
| GYW 永磁真空过滤机 GYW Permanent Magnetic Vacuum Filter        | 39 |
| 金矿氰化和冶炼设备 Gold Cyaniding and Smelting Equipment         |    |
| SJ 型双叶轮浸出搅拌槽 SJ Series Double-impeller Leaching Tank    | 41 |
| 解析电解成套设备 Desorption& Electrowinning System              | 43 |
| 工程案例 Sample Solutions                                   |    |
| 金矿选矿方案 Gold Ore Solutions                               | 45 |
| 铁矿选矿方案 Iron Ore Solutions                               | 47 |
| 其他选矿方案 Other Mineral Ore Solutions                      | 49 |
| 其他选矿方案 Other Mineral Ore Solutions                      | 51 |



## 球磨机 Ball Mill

磨机是目前应用最为广泛的一种磨矿设备。我公司生产的球磨机广泛应用于各类矿石的选矿，电力、水泥及化工等行业。粉碎比较大，可进行干式或湿式粉磨，能满足持续生产和大型化生产的要求。在各种矿石的选矿生产中应用最多的是湿式格子型和溢流型球磨机。

Ball mill is the most widely used kind of grinding equipment. Zenith Ball mills are widely used in various types of ores' beneficiation, electricity, cement and chemical industries. With high comminution ratio, it can carry out dry or wet pulverizing and can meet demand for sustainable large-scale production. The most widely used in the production of a variety of ores are wet overflow ball mill and wet grate ball mill.

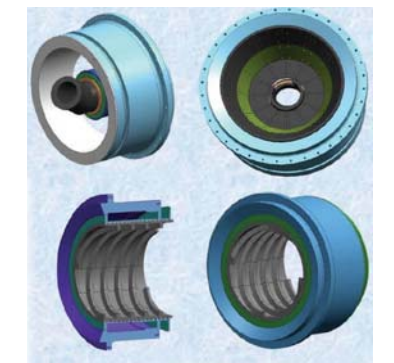


### 产品特点

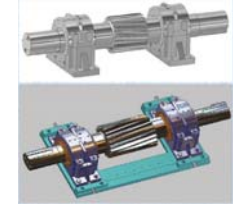
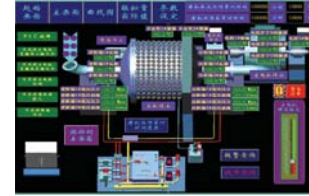
1. 中小型球磨机采用双列滚子轴承代替传统的滑动轴承，大大降低了能耗。
2. 大型球磨机采用动静压或者全静压轴承。
3. 采用空气离合器，降低了启动电流，从而达到了保护电机的目的。
4. 驱动形式可以采用同步电机或者异步电机驱动。
5. 配备慢传和起吊装置以方便维护。
6. 新型耐磨材料的使用，大大提高了易损件的使用寿命。
7. 可以选配 PLC 控制系统，提高磨机的自动化控制水平。
8. 多种可供选配的配件（圆筒筛， 扭矩可调扳手， 移动喂料小车）

### Product Features

1. Traditional sliding bearings are replaced by double row roller bearings in small and medium size ball mills to reduce energy consuming
2. Large ball mills adopt pitot pressure or hydrostatic bearings.
3. Air clutch system for starting the motor safely
4. Alternative synchronous or asynchronous motor
5. Low speed driving unit with Lifting device, convenient for maintenance.
6. New Endurable wearing parts to increase service life of vulnerable parts.



# 球磨机 Ball Mill



## 格子型球磨机主要性能参数

Main specification of Wet Grate Ball Mill

| Model    | Shell Size | E-Volume | Ball Load | R-Speed | Power    | Output Size | Capacity | Remark |
|----------|------------|----------|-----------|---------|----------|-------------|----------|--------|
|          | D×L(mm)    | (m3)     | (t)       | (r/min) | (kw)     | (mm)        | (t/h)    |        |
| ZMQG2122 | 2100×2200  | 6.7      | 14.7      | 23.8    | 160      | 0.3-0.074   | 24-5.3   | 380V   |
| ZMQG2130 | 2100×3000  | 9.2      | 17        | 23.8    | 185      | 0.3-0.074   | 26-6.0   | 380V   |
| ZMQG2136 | 2100×3600  | 11       | 19        | 23.8    | 210      | 0.3-0.074   | 29-6.5   | 380V   |
| ZMQG2430 | 2400×3000  | 12.2     | 25        | 22.8    | 250      | 0.3-0.074   | 38-7.5   | 380V   |
| ZMQG2436 | 2400×3600  | 14.6     | 30        | 22.8    | 280      | 0.3-0.074   | 42-8.5   | 380V   |
| ZMQG2445 | 2400×4500  | 18.2     | 37        | 22.8    | 400      | 0.3-0.074   | 55-10.5  | 6-10KV |
| ZMQG2721 | 2700×2100  | 10.7     | 24        | 21.7    | 280      | 0.3-0.074   | 84-8.5   | 6-10KV |
| ZMQG2730 | 2700×3000  | 15.3     | 32.5      | 21.7    | 355      | 0.3-0.074   | 120-10   | 6-10KV |
| ZMQG2736 | 2700×3600  | 18.4     | 39        | 21.7    | 400      | 0.3-0.074   | 145-12   | 6-10KV |
| ZMQG2740 | 2700×4000  | 20.5     | 43        | 21.7    | 450      | 0.3-0.074   | 159-13   | 6-10KV |
| ZMQG2745 | 2700×4500  | 23       | 50        | 21.7    | 500      | 0.3-0.074   | 180-15   | 6-10KV |
| ZMQG3231 | 3200×3100  | 22.65    | 46.9      | 18.6    | 500      | 0.3-0.074   | 182-16   | 6-10KV |
| ZMQG3236 | 3200×3600  | 26.2     | 52        | 18.8    | 560      | 0.3-0.074   | 190-19   | 6-10KV |
| ZMQG3245 | 3200×4500  | 32.8     | 65        | 18.6    | 710-800  | 0.3-0.074   | 235-29   | 6-10KV |
| ZMQG3254 | 3200×5400  | 39.2     | 81.6      | 18.6    | 800-1000 | 0.3-0.074   | 280-35   | 6-10KV |
| ZMQG3645 | 3600×4500  | 40.8     | 88        | 17.3    | 1000     | 0.3-0.074   | 259-29   | 6-10KV |
| ZMQG3650 | 3600×5000  | 45.3     | 96        | 17.3    | 1120     | 0.3-0.074   | 288-35   | 6-10KV |
| ZMQG3660 | 3600×6000  | 54.4     | 117       | 17.3    | 1250     | 0.3-0.074   | 310-38   | 6-10KV |
| ZMQG3685 | 3600×8500  | 79       | 144       | 17.3    | 1800     | 0.3-0.074   | 450-50   | 6-10KV |
| ZMQG4040 | 4000×4000  | 45       | 82        | 16.4    | 1000     | 0.3-0.074   | 230      | 6-10KV |
| ZMQG4050 | 4000×5000  | 57       | 161       | 16.4    | 1250     | 0.3-0.074   | 270      | 6-10KV |
| ZMQG4560 | 4500×6000  | 85       | 162       | 15.42   | 2000     | 0.3-0.074   | 285      | 6-10KV |
| ZMQG5264 | 5200×6400  | 123      | 229       | 14.3    | 2×1600   | 0.3-0.074   | 320      | 6-10KV |

Note: The ball mill model can be customized according to demands.

## 溢流型球磨机主要性能参数

Main specification of Wet Overflow Ball Mill.

| Model    | Shell Size | E-Volume | Ball Load | R-Speed | Power   | Output size | Capacity | Remark |
|----------|------------|----------|-----------|---------|---------|-------------|----------|--------|
|          | D×L(mm)    | (m3)     | (t)       | (r/min) | (kw)    | (mm)        | (t/h)    |        |
| ZMQY2122 | 2100×2200  | 6.7      | 14.7      | 23.8    | 160     | 0.8-0.074   | 22-5.0   | 380V   |
| ZMQY2130 | 2100×3000  | 9.2      | 17        | 23.8    | 185     | 0.8-0.074   | 25-5.8   | 380V   |
| ZMQY2136 | 2100×3600  | 11       | 19        | 23.8    | 210     | 0.8-0.074   | 28-6.0   | 380V   |
| ZMQY2430 | 2400×3000  | 12.2     | 23        | 22.8    | 250     | 0.8-0.074   | 34-6.6   | 380V   |
| ZMQY2436 | 2400×3600  | 14.6     | 25        | 22.8    | 280     | 0.8-0.074   | 40.5-7.9 | 380V   |
| ZMQY2445 | 2400×4500  | 18.2     | 31        | 22.8    | 355     | 0.8-0.074   | 50-9.8   | 380V   |
| ZMQY2721 | 2700×2100  | 10.7     | 20        | 21.7    | 280     | 3.0-0.074   | 76-6.0   | 380V   |
| ZMQY2730 | 2700×3000  | 15.3     | 28        | 21.7    | 355     | 3.0-0.074   | 108-8.8  | 380V   |
| ZMQY2736 | 2700×3600  | 18.4     | 34        | 21.7    | 355-400 | 3.0-0.074   | 130-10.5 | 380V   |
| ZMQY2740 | 2700×4000  | 20.5     | 37        | 21.7    | 400-450 | 3.0-0.074   | 144-11.5 | 6-10KV |
| ZMQY2745 | 2700×4500  | 23       | 42.5      | 21.7    | 500     | 3.0-0.074   | 180-13   | 6-10KV |
| ZMQY3231 | 3200×3100  | 22.65    | 22.65     | 18.6    | 450     | 3.0-0.074   | 164-14.4 | 6-10KV |
| ZMQY3236 | 3200×3600  | 26.2     | 26.2      | 18.8    | 500     | 3.0-0.074   | 171-17.1 | 6-10KV |
| ZMQY3245 | 3200×4500  | 32.8     | 61        | 18.6    | 630     | 3.0-0.074   | 228-22   | 6-10KV |
| ZMQY3254 | 3200×5400  | 39.3     | 73        | 18.6    | 710     | 3.0-0.074   | 270-20   | 6-10KV |
| ZMQY3645 | 3600×4500  | 40.8     | 76        | 17.3    | 800-100 | 3.0-0.074   | 233-26   | 6-10KV |
| ZMQY3650 | 3600×5000  | 45.3     | 86        | 17.3    | 1120    | 3.0-0.074   | 260-31.5 | 6-10KV |
| ZMQY3660 | 3600×6000  | 102      | 102       | 17.3    | 1250    | 3.0-0.074   | 280-34   | 6-10KV |
| ZMQY3685 | 3600×8500  | 79       | 131       | 17.3    | 1500    | 3.0-0.074   | 400-45   | 6-10KV |
| ZMQY4564 | 4500×6400  | 85       | 174       | 14.54   | 2000    | 3.0-0.074   | 158      | 6-10KV |
| ZMQY4570 | 4500×7000  | 111      | 190       | 15.6    | 2500    | 3.0-0.074   | 168      | 6-10KV |
| ZMQY5080 | 5030×8000  | 145      | 240       | 14.2    | 3500    | 3.0-0.074   | 250      | 6-10KV |

Note: The ball mill model can be customized according to demands.

## FL 系列螺旋分级机 FL Series Spiral Classifier

我公司生产的 FL 系列分级机广泛适用于选矿厂中与球磨机配成闭路循环流程中作预先分级和检查分级，有时候还可以用于洗矿，脱泥，脱水等作业。

Zenith FL spiral classifiers are widely used for separation plant. They can be combined with ball mill to form a closed circuit for preliminary classification and check classification, sometimes they can be applied for ore washing, de-sliming and de-watering as well.

### 性能特点:

1. 构造简单，易于维护；
2. 操作方便，工作稳定可靠；
3. 可以与球磨自流连接，省去用渣浆泵扬送；
4. 容积大，具有缓冲和运输作用，利于磨矿作业；

### Features:

1. Simple structure and easy to maintain
2. Easy operation and stable performance
3. Gravity connection with Ball mills, slurry pump conveying is not necessary
4. Large volume with buffering and conveying effect, better for grinding work.



### 技术参数

#### Technical Specification

| Model   | D-Spiral | R-Speed | Water Tank | Slant Angle | Capacity |           | Driving (kw) | Elevating (kw) | Weight (T) |
|---------|----------|---------|------------|-------------|----------|-----------|--------------|----------------|------------|
|         | mm       | r/min   | LxW (mm)   |             | O-flow   | Returning |              |                |            |
| FLG-5   | 500      | 8-12.5  | 4500x555   | 14-18.5     | 32       | 143~261   | 1.1          |                | 1.6        |
| FLG-7   | 750      | 6-10    | 5500x830   | 14-18.5     | 65       | 256~564   | 3            |                | 2.9        |
| FLG-10  | 1000     | 5-8     | 6500x1112  | 14-18.5     | 85       | 473~1026  | 5.5          |                | 4.4        |
| FLG-12  | 1200     | 5-8     | 6500x1372  | 14-18.5     | 155      | 1170~1600 | 5.5          | 1.5            | 8.8        |
| FLG-15  | 1500     | 4-6     | 8265x1664  | 14-18.5     | 235      | 1140~2740 | 7.5          | 2.2            | 11.68      |
| FLG-20  | 2000     | 3-3.5   | 8400x2200  | 14-18.5     | 400      | 3890~5940 | 11or15       | 3              | 20.45      |
| FLG-24  | 2400     | 2.5-4   | 9130x2600  | 14-18.5     | 580      | 6800      | 8.5          | 3              | 25.65      |
| FLG-30  | 3000     | 3.2     | 12500x3200 | 14-18.5     | 890      | 11650     | 22           | 4              | 37         |
| 2FLG-12 | 1200     | 6       | 6500x2600  | 14-18.5     | 310      | 2340~3200 | 5.5x2        | 1.5x2          | 15.84      |
| 2FLG-15 | 1500     | 2.5,4,6 | 8250x3200  | 14-18.5     | 470      | 2280~5480 | 7.5x2        | 2.2x2          | 22.1       |
| 2FLG-20 | 2000     | 3.6-5.5 | 8400x4280  | 14-18.5     | 800      | 11880     | 11x2         | 3x2            | 36.4       |
| 2FLG-24 | 2400     | 3.6-7   | 9130x5100  | 14-18.5     | 1160     | 13600     | 2x18.5       | 3x2            | 45.874     |
| 2FLG-30 | 3000     | 3.2     | 12500x6300 | 14-18.5     | 1785     | 23300     | 2x22         | 4x2            | 73.03      |
| FLC-10  | 1000     | 5       | 8400x1112  | 14-18.5     | 75       | 473~1026  | 5.5          | 0.4            | 6          |
| FLC-12  | 1200     | 5-6.7   | 8400x1372  | 14-18.5     | 120      | 1170~1630 | 7.5          | 2.2            | 11.02      |
| FLC-15  | 1500     | 2.5-4.6 | 10500x1664 | 14-18.5     | 185      | 1830~2740 | 7.5          | 2.2            | 15.34      |
| FLC-20  | 2000     | 3.6-5.5 | 12900x2200 | 14-18.5     | 320      | 3290~5940 | 11or15       | 3              | 29.06      |
| FLC-24  | 2400     | 3.6     | 14130x2600 | 14-18.5     | 455      | 6800      | 18.5         | 4              | 37.267     |
| FLC-30  | 3000     | 3.2     | 14300x3200 | 14-18.5     | 705      | 11650     | 30           | 4              | 43.5       |
| 2FLC-12 | 1200     | 6       | 8400x2600  | 14-18.5     | 240      | 2340~3260 | 7.5x2        | 1.5x2          | 19.61      |
| 2FLC-15 | 1500     | 2.5-4.6 | 10500x3200 | 14-18.5     | 370      | 2280~5480 | 7.5x2        | 2.2x2          | 27.45      |
| 2FLC-20 | 2000     | 3.6-5.5 | 12900x4280 | 14-18.5     | 640      | 11880     | 11x2         | 3x2            | 50         |
| 2FLC-24 | 2400     | 3.6     | 14100x5100 | 14-18.5     | 910      | 13608     | 2x18.5       | 4x2            | 65.283     |
| 2FLC-30 | 3000     | 3.2     | 14300x6300 | 14-18.5     | 1410     | 23300     | 2x22         | 4x2            | 84.87      |

Note: Mode FLG means high weir and single spiral type; Model 2FLC means low weir and double spiral type. The above technical specification is for reference only.



## FX 系列水力旋流器 FX Series Hydro-cyclone

水力旋流器是利用离心力将矿浆分级的设备，由于没有运动、动力部件，需要配套相应的泥浆泵。在选矿生产中主要用于分级、脱水和脱泥作业。

Hydro-cyclone is a kind of equipment for classifying the ore pulp by use of centrifugal force. It has no motion and dynamic parts, and needs to be matched with corresponding slurry pump. It is mainly used in ore dressing industry for classifying, de-watering and de-sliming.



### 性能特点

1. 结构简单，易于安装与操作。
2. 体积小，占地面积少，易于运输。
3. 处理量大，运行成本低。
4. 分级粒度细、分级效率高。
5. 可以多台并联或串联使用，提高分级效率和处理能力。
6. 可以采用自动化控制。
7. 采用聚氨酯耐磨材质，使用寿命大大提高。

### Features

1. Simple structure, easy installation and operation.
2. Small size and floor area, easy to transport.
3. Larger capacity with lower cost.
4. Finer partition size and high classifying efficiency.
5. More powerful and efficient combined unit can be selected by connecting several units of cyclone in parallel or in series.
6. Alternative Automation control system.
7. Polyurethane wear-resisting material to make the life-span longer.



### 技术参数 Technical Specification

| Model  | Internal dia. (mm) | Inlet dia. (mm) | Overflow diameter (mm) | Underflow diameter (mm)    | Cone angle (°) | Max feed dia. (mm) | Feeding pressure (Mpa) | Capacity (m <sup>3</sup> /h) | Cut size (μm) | Dimension LxWxH (mm) |
|--------|--------------------|-----------------|------------------------|----------------------------|----------------|--------------------|------------------------|------------------------------|---------------|----------------------|
| FX-660 | 660                | 187, 167        | 180,200, 220,240       | 80, 110,150                | 20             | 16                 | 0.03-0.4               | 250-360                      | 74-220        | 1215x850x2720        |
| FX-500 | 500                | 130, 120        | 130,140, 160,80,220    | 35,45,50, 65,70,80, 90,100 | 25             | 10                 | 0.03-0.4               | 140-220                      | 74-200        | 951x718x1825         |
|        |                    |                 |                        |                            | 20             |                    |                        |                              | 74-200        | 850x623x1825         |
|        |                    |                 |                        |                            | 10             |                    |                        |                              | 74-150        | 951x718x2280         |
| FX-350 | 350                | 80              | 80,90,105, 115,120     | 30,35,40 45,50,60,70       | 25             | 6                  | 0.03-0.4               | 60-105                       | 50-150        | 530x413x1411         |
|        |                    |                 |                        |                            | 20             |                    |                        |                              | 50-150        | 530x413x1411         |
|        |                    |                 |                        |                            | 15             |                    |                        |                              | 50-120        | 530x413x1674         |
| FX-300 | 300                | 64, 75          | 65,80, 100,120         | 20,25, 30,35,40            | 20             | 5                  | 0.03-0.4               | 45-90                        | 50-150        | 530x410x1305         |
|        |                    |                 |                        |                            | 15             |                    |                        |                              | 40-100        | 563x410x1490         |
|        |                    |                 |                        |                            | 10             |                    |                        |                              | 40-100        | 563x534x1178         |
| FX-250 | 250                | 55, 74, 80      | 60,75, 80,100,120      | 16,18,20, 25,30,35,40      | 15             | 3                  | 0.05-0.4               | 40-65                        | 40-100        | 548x390x1057         |
|        |                    |                 |                        |                            | 10             |                    |                        |                              | 30-100        | 548x415x1380         |
|        |                    |                 |                        |                            | 20             |                    |                        |                              | 40-100        | 548x307x1025         |
| FX-200 | 200                | 48              | 40,45, 55,65           | 16,20, 24,28,32            | 15             | 2                  | 0.05-0.4               | 25-40                        | 30-100        | 320x307x1114         |
|        |                    |                 |                        |                            | 20             |                    |                        |                              | 30-74         | 320x270x682          |
|        |                    |                 |                        |                            | 15             |                    |                        |                              | 30-74         | 252x349x899          |
| FX-150 | 150                | 36              | 30,35, 40,45           | 8,10,12,14, 16,18,20,22    | 8              | 1.5                | 0.05-0.4               | 11-20.0                      | 20-74         | 290x295x1267         |
|        |                    |                 |                        |                            | 17             |                    |                        |                              | 20-100        | 280x185x617          |
|        |                    |                 |                        |                            | 8              |                    |                        |                              | 20-74         | 210x240x973          |
| FX-125 | 125                | 26              | 25,30, 35,40           | 8,10,12, 14,16,18          | 20             | 1                  | 0.05-0.4               | 8-15.0                       | 20-100        | 250x210x525          |
|        |                    |                 |                        |                            | 15             |                    |                        |                              | 10-100        | 257x210x575          |
|        |                    |                 |                        |                            | 8              |                    |                        |                              | 10-74         | 257x210x829          |
| FX-100 | 100                | 23              | 20,25, 30,40           | 8,10,12, 14,16,18          | 15             | 1                  | 0.05-0.4               | 5-12.0                       | 20-74         | 240x230x459          |
|        |                    |                 |                        |                            | 7              |                    |                        |                              | 5-40          | 240x230x700          |
|        |                    |                 |                        |                            | 5              |                    |                        |                              | 3-10.0        | 160x152x587          |
| FX-75  | 75                 | 13              | 15,17,20               | 6,7,8, 10,12               | 3              | 0.6                | 0.1-0.5                | 2-5.0                        | 2-10.0        | 120x110x576          |
|        |                    |                 |                        |                            | 5              |                    |                        |                              | 1-5.0         | 60x34x140            |
| FX-25  | 25                 | 5               | 5,6,7,8                | 2,3,4,5                    | 4              | 0.2                | 0.1-0.5                | 0.3-1                        | 0.05-1        |                      |
|        |                    |                 |                        |                            | 3              |                    |                        |                              |               |                      |
| FX-10  | 10                 | 2               | 2,3,4                  | 1,2                        | 4              | 0.1                | 0.1-0.1                | 0.05-1                       | 1-5.0         | 60x34x140            |

Note: The above technical specification is for reference only. All can be customer-made according to requirements.

## BF 型浮选机 BF Series Flotation Cells

BF 系列浮选机是 SF 型浮选机的改进型，主要用于铁矿等比重较大的矿物选别。

BF series flotation Cell is the improvement of SF series flotation Cell. It is mainly used for process the mineral ore with specific gravities, like iron ore.

### 技术优势:

1. 叶轮由闭式双截锥体组成，可以产生强大矿浆循环力；
2. 吸气量大，功耗低；每槽兼有吸气，吸浆和浮选三重功能，自成浮选回路；
3. 不需要任何辅助，水平配置，便于流程变更。
4. 矿浆循环合理，能最大限度地减少粗砂沉淀；
5. 设有矿浆液面的自控和电控装置，调节方便。



### Technical Advantages

1. Impeller is composed of the dosed double section cones and it can produce strong slurry cycle downward;
2. The capacity of air suction is large, and the power consumption is low;
3. Every tank has three functions of air suction, slurry suction and flotation simultaneously with automatic flotation return circuit; The circuit change is convenient for horizontal position without any supplementary equipment;
4. The slurry cycle is rational, and the settlement of coarse sand can be reduced largely.
5. It is convenient to adjust slurry level with auto electro-controlling devices.

### 主要参数 Main Specifications

| Model   | Effective Volume (m <sup>3</sup> ) | Size of Tank (L x W x H) (mm) | Impeller Diameter (mm) | Impeller Speed (m/min) | Capacity (m <sup>3</sup> /min) | Motor Power (kw) | Air flow sucked (m <sup>3</sup> /m <sup>2</sup> .min) | Single Tank Weight (kg) |
|---------|------------------------------------|-------------------------------|------------------------|------------------------|--------------------------------|------------------|---|-------------------------|
| BF-0.25 | 0.25                               | 650x600x700                   | 250                    | 6                      | 0.12-0.28                      | 1.5              | 0.9-1.05  | 370                     |
| BF-0.37 | 0.37                               | 740x740x750                   | 286                    | 7.2                    | 0.2-0.4                        | 1.5              | 0.9-1.05  | 470                     |
| BF-0.65 | 0.65                               | 850x950x950                   | 300                    | 7.35                   | 0.3-0.7                        | 3                | 0.9-1.10  | 932                     |
| BF-1.2  | 1.2                                | 1050x1150x1100                | 450                    | 7.02                   | 0.6-1.2                        | 5.5              | 0.9-1.10  | 1370                    |
| BF-2.0  | 2                                  | 1400x1450x1120                | 500                    | 7.5                    | 1.0-2.0                        | 7.5              | 0.9-1.10  | 1750                    |
| BF-2.8  | 2.8                                | 1650x1650x1150                | 550                    | 8.06                   | 1.4-3.0                        | 11               | 0.9-1.10  | 2130                    |
| BF-4.0  | 4                                  | 1900x2000x1200                | 650                    | 8                      | 2.4-4.0                        | 15               | 0.9-1.10  | 2585                    |
| BF-6.0  | 6                                  | 2200x2350x1300                | 700                    | 7.5                    | 3.0-6.0                        | 18.5             | 0.9-1.10  | 3300                    |
| BF-8.0  | 8                                  | 2250x2850x1400                | 760                    | 7.5                    | 4.0-8.0                        | 22               | 0.9-1.10  | 4130                    |
| BF-10   | 10                                 | 2250x2850x1700                | 760                    | 7.52                   | 5.0-10                         | 22               | 0.9-1.10  | 4500                    |
| BF-16   | 16                                 | 2850x3800x1700                | 850                    | 8.7                    | 8.0-16                         | 37               | 0.9-1.10  | 8320                    |
| BF-20   | 20                                 | 2850x3800x2000                | 850                    | 8.7                    | 10.0-20                        | 45               | 0.9-1.10  | 8670                    |
| BF-24   | 24                                 | 3150x4150x2000                | 920                    | 8.7                    | 12.0-24                        | 45               | 0.9-1.10  | 8970                    |



## SF 型浮选机 SF Series Flotation Cells

SF 系列浮选机可以自吸空气和矿浆。槽体为前倾式，不易沉槽，利于泡沫前返；利用双叶片叶轮，对底部粗砂有良好搅拌作用。

SF series flotation cell can imbibe the air and ore pulp spontaneously. Its fore-raking tank can ensure slurry and foams will not sink and foams can return. Its double-blade impeller can agitate the coarse sand at the bottom adequately.



### 技术优势

1. 吸气量大，能耗小；
2. 水平布置，不需泡沫泵；
3. 叶轮圆周速度低，叶轮盖板寿命长；
4. 矿浆按固定方式进行上、下双循环，有利于粗粒矿物悬浮。



### Technical Advantages

1. Large air suction amount, low power consumption;
2. Horizontal arrangement, no foam pump required,
3. Low peripheral velocity of the impeller, long service life of the impeller cover plate,
4. Upper and lower double circulation of the ore pulp in a fixed way, which is conducive to the suspension of coarse grain minerals.

### 主要参数 Main Specifications

| Model   | Effective Volume (m <sup>3</sup> ) | Size of Tank (L x W x H) (mm) | Impeller Diameter (mm) | Impeller Speed (r/min) | Capacity (m <sup>3</sup> /min) | Motor Power (kw) | Air flow sucked (m <sup>3</sup> /m <sup>2</sup> .min) | Single Tank Weight (kg) |
|---------|------------------------------------|-------------------------------|------------------------|------------------------|--------------------------------|------------------|---|-------------------------|
| SF-0.15 | 0.15                               | 500x500x600                   | 200                    | 536                    | 0.06-0.18                      | 1.5/0.55         | 0.8-1   | 269                     |
| SF-0.37 | 0.37                               | 700x700x750                   | 296                    | 386                    | 0.2-0.4                        | 1.5/0.05         | 0.8-1   | 468                     |
| SF-0.7  | 0.7                                | 820x900x950                   | 350                    | 400                    | 0.3-0.9                        | 3/1.1            | 0.8-1   | 805                     |
| SF-1.2  | 1.2                                | 1100x1100x1100                | 450                    | 312                    | 0.6-1.2                        | 5.5/1.1          | 1-1.2   | 1373                    |
| SF-2.8  | 2.8                                | 1700x1600x1150                | 550                    | 268                    | 1.5-3.5                        | 11/1.5           | 1-1.2   | 2138                    |
| SF-4    | 4                                  | 1850x2050x1200                | 650                    | 220                    | 2-4                            | 15/1.5           | 1-1.2   | 2582                    |
| SF-8    | 8                                  | 2200x2900x1400                | 760                    | 191                    | 4-8                            | 30/1.5           | 0.9-1   | 4129                    |
| SF-10   | 10                                 | 2200x2900x1700                | 760                    | 191                    | 5-10                           | 30/1.5           | 0.9-1   | 4486                    |
| SF-16   | 16                                 | 2850x3800x1700                | 760                    | 191                    | 5-16                           | 30x2/1.5         | 0.9-1   | 8320                    |
| SF-20   | 20                                 | 2850x3800x2000                | 760                    | 191                    | 5-20                           | 30x2/1.5         | 0.9-1   | 9828                    |

## XCF/KYF 型浮选机 XCF/KYF Series Flotation Cells

XCF 型与 KYF 型浮选机均属于充气型浮选机，其广泛应用于有色金属，黑金属和非金属矿物的选矿作业中。两者常常配套使用，两者结构特点相似，外形尺寸基本相同。

XCF and KYF are enforced aeration flotation cells. They are widely used for processing nonferrous metals, ferrous metal, and non-metallic minerals. They are always work together. They have similar structures features and almost the same overall dimension sizes.

### 技术优势:

1. 叶轮直径小，圆周速度低，功耗低;
2. 设有空气分配器，空气分散效果好;
3. 叶轮具有离心泵的作用，使固体颗粒充分悬浮;
4. 采用 U 型槽体，可减少短路循环。
5. 磨损轻，药剂消耗少，运行成本低。
6. 可以带负荷起动，结构简单维修容易;
7. 具有矿浆液面控制系统，操作管理方便。
8. KYF 型无自吸矿浆能力，功率较低; XCF 具有矿浆自吸能力，功耗较 KYF 略高一些;
9. XCF 和 KYF 常常配置成机组，XCF 作为吸入槽，KYF 作为直流槽，联合机组可以水平配置，不需要泡沫泵。



### Technical Advantages

1. It has a smaller diameter of impeller and lower power consumption which saves 30%-50% of power.
2. An air distributor is equipped with in the tank, so air is evenly dispersed.
3. The impeller works as a centrifugal pump to make the solid particles suspending.
4. The tank is made as U type, reducing sand settlement to the least.
5. Due to reasonable design of the impeller structure and the impeller space, impeller wearing is even, reagents consumption and operation costs are low.
6. They both can start work with load. They are in a simple structure with easy maintenance.
7. It is convenient to adjust slurry level with auto electro-controlling devices.
8. KYF series cannot suck slurry spontaneously, so its power consumption is low while XCF series can suck slurry spontaneously, so its power consumption is higher.
9. KYF series and XCF series are generally used cell units. XCF works as sucking flow tank and KYF as the direct flow tank. The cell units can be allocated horizontally without foam pump.

### 主要参数 Main Specifications

| Model       | Effective Volume (m <sup>3</sup> ) | Size of Tank (L x W x H) (m) | Impeller Diameter (mm) | Inlet Air Pressure (Kpa) | Capacity (m <sup>3</sup> /min) | Power (kw) | Airflow Setting (m <sup>3</sup> / m <sup>2</sup> . min) | Single Cell Weight(kg) |
|-------------|------------------------------------|------------------------------|------------------------|--------------------------|--------------------------------|------------|---|------------------------|
| XCF/KYF-1   | 1                                  | 1.00x1.00x1.00               | 0.40/0.34              | >11                      | 0.2~0.5 / 0.2~1                | 4/3        | 0.05~1.4  | 920/1056               |
| XCF/KYF-2   | 2                                  | 1.30x1.30x1.25               | 0.47/0.41              | >12                      | 0.5~1 / 0.5~2                  | 5.5/4      | 0.05~1.4  | 1158/1346              |
| XCF/KYF-3   | 3                                  | 1.60x1.60x1.40               | 0.54/0.48              | >14                      | 0.7~1.5 / 0.7~3                | 7.5/5.5    | 0.05~1.4  | 2172/2074              |
| XCF/KYF-4   | 4                                  | 1.80x1.80x1.50               | 0.62/0.55              | >15                      | 1~2 / 1~4                      | 11/7.5     | 0.05~1.4  | 2375/2100              |
| XCF/KYF-6   | 6                                  | 2.05x2.05x1.75               | 0.62/0.55              | >17                      | 1~3 / 1~6                      | 18.5/11    | 0.05~1.4  | 3545/3278              |
| XCF/KYF-8   | 8                                  | 2.20x2.20x1.95               | 0.72/0.63              | >19                      | 2~4 / 2~8                      | 22/15      | 0.05~1.4  | 4142/3857              |
| XCF/KYF-10  | 10                                 | 2.40x2.40x2.10               | 0.76/0.66              | >20                      | 3~5 / 3~10                     | 30/22      | 0.05~1.4  | 4894/4334              |
| XCF/KYF-16  | 16                                 | 2.80x2.80x2.40               | 0.86/0.74              | >23                      | 4~8 / 4~16                     | 37/22      | 0.05~1.4  | 6928/7545              |
| XCF/KYF-20  | 20                                 | 3.00x3.00x2.70               | 0.91/0.78              | >25                      | 5~10 / 5~20                    | 45/37      | 0.05~1.4  | 9200/8240              |
| XCF/KYF-24  | 24                                 | 3.10x3.10x2.90               | 0.93/0.80              | >27                      | 6~12 / 6~24                    | 55/37      | 0.05~1.4  | 10819/9820             |
| XCF/KYF-30  | 30                                 | 3.50x3.50x3.03               | 0.88/0.90              | >31                      | 7~15 / 7~30                    | 55/45      | 0.05~1.4  | 14810/13820            |
| XCF/KYF-40  | 40                                 | 3.80x3.80x3.40               | 1.05                   | >32                      | 8~19 / 8~38                    | 75/55      | 0.05~1.4  | 18790/17097            |
| XCF/KYF-50  | 50                                 | 4.40x4.40x3.50               | 1.20/1.03              | >33                      | 10~25 / 10~40                  | 90/75      | 0.05~1.4  | 22000                  |
| XCF/KYF-70  | 70                                 | Φ 4.30x4.10                  | 1.12                   | >35                      | 13~50                          | 90         | 0.05~1.4  | 26200                  |
| XCF/KYF-100 | 100                                | Φ 5.80x4.56                  | 1.26                   | >40                      | 20~60                          | 132        | 0.05~1.4  | 33500                  |
| XCF/KYF-130 | 130                                | Φ6.50x4.90                   | 1.30                   | >45                      | 20~60                          | 160        | 0.05~1.4  | 36200                  |
| XCF/KYF-160 | 160                                | Φ7.00x5.20                   | 1.35                   | >48                      | 20~60                          | 160        | 0.05~1.4  | 42500                  |



## CTL 型永磁干式磁选机 CTL Series Dry Magnetic Separator

我公司研发的 CTL 型的永磁干式磁选机，结构简单可以直接安装在皮带输送机头部，也可以配置成单独的干式磁选机。主要用于低品味矿石的预选工作，提高入磨品味，降低选矿成本。同时也可以应用于非磁性物料的除铁作业。

CTL Series Dry Magnetic Separators are simple in terms of structures. They can be simply installed at the head of belt conveyors. They can also work as dry magnetic separation machines. They are mainly applied in primarily separating low-grade ores to improve raw ore grade for feeding mills and to lower costs for ore separation. They are also suitable for de-ironing non-metallic materials.



### 技术优势

- 1.工作平稳，安全可靠，易于维修；
- 2.用于低品位矿石的预选工作，提高入磨品位，降低选矿成本；
- 3.磁系采用稀土钕铁硼材料，可以根据实际要求选择不同的磁场强度

### Technical Advantages

- 1.CTL Series Dry Magnetic Separators are efficient, reliable and easy for maintenance.
- 2.They are particularly suitable for primarily separating low-grade ores, improve raw ore grade for feeding mills and lower magnetic separating costs.
- 3.The magnet system of CTL Series Dry Magnetic Separators is made from rare-earth permanent magnetic material--NdFeB. Their magnetic field intensities can be chosen based on different requirements.

### 主要参数 Main Specifications

| Model    | Roller Size<br>DxL (mm) | Speed<br>(r/min) | Capacity<br>(T/h) | Overall Dimension<br>LxWxH (mm) | Power<br>(kw) | Weight<br>(t) |
|----------|-------------------------|------------------|-------------------|---------------------------------|---------------|---------------|
| CTL-0816 | 800x1600                | 0-63             | 35-55             | 3053x1295x1671                  | 7.5           | 2.75          |
| CTL-0818 | 800x1800                | 0-63             | 55-70             | 3266x1295x1671                  | 11            | 3.30          |
| CTL-0821 | 800x2100                | 0-63             | 70-85             | 3936x1295x1671                  | 15            | 3.90          |
| CTL-0824 | 800x2400                | 0-63             | 85-100            | 4235x1295x1671                  | 18.5          | 4.45          |
| CTL-1021 | 1050x2100               | 0-50             | 100-130           | 4030x1545x2046                  | 18.5          | 4.80          |
| CTL-1021 | 1050x2100               | 0-50             | 100-130           | 4150x1545x1850                  | 18.5          | 4.68          |
| CTL-1224 | 1200x2400               | 0-50             | 115-150           | 4720x1545x1850                  | 22            | 5.18          |

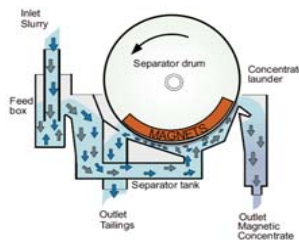
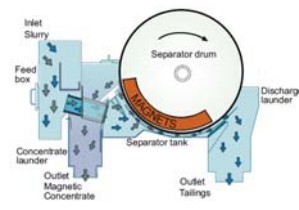
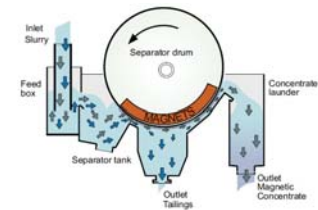
Note: The magnetic strength should be determined in accordance with the nature of the ore. CTL Series Dry separator can be customer-made.

## CT 型湿式磁选机 CT Series Wet Magnetic Separator

CT 型湿式永磁筒式磁选机由圆筒、磁系和分选槽、传动装置及给排料等溢流装置组成。可以广泛应用于磁铁矿的选矿，脱水以及非金属矿物的除铁提纯作业。永磁筒式磁选机根据工作性质的不同，可以分为以下 3 种磁选机：顺流式（S）、逆流式（N）、半逆流式（B）。



CT Series Wet Magnetic Separators consist of separator drum, magnetic system, separator tank, transmission device and overflow devices for feeding and discharging. They are widely applied in magnetically separating magnetite, de-watering and de-ironing for non-metallic ores. According to different working principles, they are classified into three kinds: current style(S), counter-current style (N) and Semi-counter-current style (B).



|                  |                               |
|------------------|-------------------------------|
| Current Type (S) | Counter-current Type (N)      |
|                  | Semi-counter-current Type (B) |

### 技术优势

1. 选用钕铁硼稀土永磁材料，不锈钢滚筒，表面覆着橡胶面，提高磁选效果；可选用耐磨的陶瓷滚筒；
2. 磁系调节装置，可调节磁系角度，获得最佳磁选效果；
3. 可单机使用，可多台并联，也可串联使用实现多次精选；
4. 适用于处理粒度小于 0.2 毫米的强磁性矿物的粗选与精选；



### Technical Advantages

1. The magnet is made from rare-earth permanent magnetic material--NdFeB; Stainless steel separator drum is covered with rubber to achieve higher separation performance; The wearable ceramic drum is optional.
2. Magnetic system adjusting device can adjust magnetic angle to achieve good separation performance.
3. CT series wet magnetic separators can be used singly, multiply or parallelly.
4. They are suitable for rough or fine separating strong magnetic minerals smaller than 0.2mm.

### 主要参数 Main Specifications

| Model          | Roller Size<br>DxL (mm) | Speed<br>(r/min) | Capacity<br>(T/h) | Overall Dimension<br>LxWxH (mm) | Power<br>(kw) | Weight<br>(t) |
|----------------|-------------------------|------------------|-------------------|---------------------------------|---------------|---------------|
| CT(S/N/B)-712  | 750x1200                | 35               | 10-15             | 2330x1770x1280                  | 3             | 1.85          |
| CT(S/N/B)-718  | 750x1800                | 35               | 20-35             | 2930x1770x1280                  | 3             | 2.43          |
| CT(S/N/B)-918  | 900x1800                | 28               | 25-40             | 3095x1769x1465                  | 4             | 2.75          |
| CT(S/N/B)-924  | 900x2400                | 28               | 40-55             | 3695x1769x1465                  | 4             | 3.65          |
| CT(S/N/B)-1018 | 1050x1800               | 22               | 45-60             | 3115x1999x1565                  | 5.5           | 3.6           |
| CT(S/N/B)-1021 | 1050x2100               | 22               | 52-70             | 3415x1999x1565                  | 5.5           | 4.2           |
| CT(S/N/B)-1024 | 1050x2400               | 22               | 60-80             | 3715x1999x1565                  | 5.5           | 4.8           |
| CT(S/N/B)-1030 | 1050x3000               | 22               | 80-120            | 4315x1999x1565                  | 7.5           | 6.26          |
| CT(S/N/B)-1218 | 1200x1800               | 19               | 60-75             | 3150x2300x1920                  | 7.5           | 5.85          |
| CT(S/N/B)-1224 | 1200x2400               | 19               | 80-110            | 3750x2300x1920                  | 7.5           | 6.97          |
| CT(S/N/B)-1230 | 1200x3000               | 19               | 100-140           | 4350x2300x1920                  | 7.5           | 8.5           |
| CT(S/N/B)-1545 | 1500x4500               | 14               | 160-220           | 6050x2700x2300                  | 15            | 15            |

Note: The magnetic strength should be determined in accordance with the nature of the ore. CT series wet magnetic separator can be customer-made.



## ZGT 型高梯度磁选机 ZGT Series High Gradient Magnetic Separator

我们集团可以提供 ZGT 型电磁高梯度磁选机，其利用磁力，脉动流体力和重力等综合力场进行选矿作业。主要适用于细粒度（小于 0.074mm（-200 目）占 60-100% 或者 2mm 以下）的赤铁矿、锰矿、钛铁矿、黑钨矿、钽铌矿等弱磁性矿物的选矿以及：石英、长石、霞石、萤石、硅线石、锂辉石、高岭土等非金属矿除铁、提纯。



We can provide customers with ZGT Series High Gradient Magnetic Separators, which make full use of comprehensive force including magnetic force, pulsating fluid force and gravity to carry out separation work. ZGT Series High Gradient Magnetic Separators are mainly suitable for separating weak magnetic ores such as hematite, manganese ore, ilmenite, wolframite and tantalum-niobium ores, and de-ironing or purifying non-metallic materials like quartz, feldspar, nepheline, fluorite, sillimanite, spodumene and kaolin. The best fineness for separation is -0.074mm (200 mesh) accounting for 60-100% or -2mm.



### 技术优势

1. 转环立式旋转，反向冲洗精矿，磁介质不易堵塞；
2. 配有矿浆脉动机构，使矿浆中的矿粒始终处于松散状态，可提高磁性精矿的质量。
3. 上限达到 2.0 毫米，简化了现场分级作业，分选粒度范围宽。
4. 富集比大，回收率高；操作维修方便，适应性强。

### Technical Advantages

1. The ring is rotated vertically and concentrates are washed reversely, so magnetic medium will not be blocked easily.
2. Slurry pulsating devices keep ore particles loose all the time, thus improving quality of magnetic concentrates.
3. Their separation size range is large and the max separation size is 2.0mm. Therefore, it simplifies classification work at working sites.
4. High beneficiation ratio and high recovery rate; Simple operation and easy maintenance with good adaptability.

### 主要参数 Main Specifications

| Model    | Max Feeding Size (mm) | Feeding Density (%) | Slurry Passing Capacity (m <sup>3</sup> /h) | Capacity of Dry Ore (m <sup>3</sup> /h) | Power (kw) | Weight (t) |
|----------|-----------------------|---------------------|---|---|------------|------------|
| ZGT-500  | 1.0                   | 10-40               | 0.5-1.0                                     | 0.05-0.25                               | 13.5       | 1.5        |
| ZGT-750  | 1.0                   | 10-40               | 0.1-2.0                                     | 0.1-0.5                                 | 22         | 3          |
| ZGT-1000 | 1.3                   | 10-40               | 12.5-20                                     | 4-7                                     | 28.6       | 6          |
| ZGT-1250 | 1.3                   | 10-40               | 20-50                                       | 10-18                                   | 35         | 14         |
| ZGT-1500 | 1.3                   | 10-40               | 50-100                                      | 20-30                                   | 44         | 20         |
| ZGT-1750 | 1.3                   | 10-40               | 75-150                                      | 30-50                                   | 62         | 35         |
| ZGT-2000 | 1.3                   | 10-40               | 100-200                                     | 50-80                                   | 74         | 50         |
| ZGT-2500 | 1.3                   | 10-40               | 200-400                                     | 100-150                                 | 94         | 105        |

Note: The magnetic strength should be determined in accordance with the nature of the ore. ZGT Series High Gradient Magnetic Separators can be customer-made.

## JT 型锯齿波跳汰机 JT Series Sawtooth Wave Jigger

锯齿波跳汰机是一种高效、节能、环保的新型重选设备，广泛用于砂金、钨、锡、铁、锰、钛、铬、硫、煤、金刚石等多种矿物选别和锰渣、铬渣、不锈钢渣等冶炼渣回收，矿山选尾矿中的金属回收处理等。

Sawtooth wave jigger is environmental friendly, high-efficient and new energy-saving gravity separation equipment, which is widely applicable to various minerals separation of gold, tungsten, tin, iron, manganese, titanium, chromium, sulfur, coal and diamond and the smelting slag recovery of manganese slag, chromium slag and stainless steel slag as well as metal recycling of tailings.

### 技术优势

1. 处理能力大;
2. 选别粒度范围广，回收率高;
3. 提高了中细粒级有用矿物的回收率;
4. 耗水量减少，占地面积减少;
5. 冲程可调整;
6. 可处理矿物粒度最大可达 60mm。

### Technical Advantages

1. Large handling capacity;
2. Wide range of selective recovery granularity and high recovery rate;
3. Recovery rate of valuable mineral with medium-fine particle-size increased;
4. Low water consumption and low floor space;
5. Stroke is adjustable;
6. Max handling mineral particle size reaches 60mm.



### 主要参数 Main Specifications

| Model                                 |                                       | JT-0.57           | JT1-1              | JT2-2              | JT3-1              | JT4-2                                    | JT5-2  |
|---------------------------------------|---------------------------------------|-------------------|--------------------|--------------------|--------------------|--|--|
| Jigging Chamber                       | Section Form                          | Trapezium         | Trapezium          | Rectangle          | Trapezium          | Rectangle                                | Trapezium                                      |
|                                       | L*W(mm)                               | 450-750<br>×950   | 450-900<br>×1500   | 1070×1070          | 960-2000<br>×1950  | 1510×1510                                | 1200-2000<br>×3150                             |
|                                       | Column Number                         | Single            | Single             | Single             | Single             | Single                                   | Single   |
|                                       | Chambers                              | 1                 | 1                  | 2                  | 1                  | 2  | 2  |
|                                       | Single chamber area (m <sup>2</sup> ) | 0.57              | 1                  | 1.14               | 3.3                | 2.43                                     | 2.12 (single chamber)<br>2.77 (double chamber) |
| Total area(m <sup>2</sup> )           |                                       | 0.57              | 1                  | 2.28               | 3.3                | 4.86                                     | 5  |
| Stroke Coefficient                    |                                       | 0.57              | 0.64               | 0.45               | 1                  | 0.58 (single power)<br>0.45 (dual power) | 0.58 (single power)<br>0.45 (dual power)       |
| Max Feeding Size(mm)                  |                                       | 6                 | 5                  | 10                 | <20                | 8, plus sieve automatic discharge<60     | 8, plus sieve automatic discharge <60          |
| Capacity(t/h)                         |                                       | 1-2.5             | 2-3                | 4-8                | 10-15              | 12-16                                    | 10-20  |
| Water Consumption (m <sup>3</sup> /h) |                                       | 1-2               | 2-3                | 2-4                | 3-6                | 4-8                                      | 5-10   |
| Separator                             | Stroke (mm)                           | 12, 17, 21        | 12, 17, 21         | 12, 17, 21         | 10-47 adjustable   | 10-30                                    | 15, 20, 25                                     |
|                                       | Frequency (min <sup>-1</sup> )        | 60-156 adjustable | 60-156 adjustable  | 60-156 adjustable  | 80-100 adjustable  | 80-120 adjustable                        | 80-120 adjustable                              |
| Motor                                 | Power (kw)                            | 1.5               | 2.2                | 3                  | 5.5                | 5.5x2<br>Or 7.5x1                        | 5.5x2<br>Or 7.5x1                              |
| Overall Dimension (L*W*H) (mm)        |                                       | 1530×780<br>×1550 | 2060×1112<br>×1890 | 2870×1520<br>×1880 | 2662×2000<br>×3030 | 4240×1990<br>×2750                       | 3940×2006<br>×2580                             |
| Weight (kg)                           |                                       | 612               | 989                | 1637               | 3260               | 3500                                     | 3854   |

Notes: The above data is only for your reference, capacity and hutch water varying from ore granularity, ore property and operating condition.

## 6S 型摇床 6S Series Shaking Table

6S 摇床是重力选矿的主要设备之一，它广泛应用于选别钨、锡、钽、铌、金和其他稀有金属和贵金属矿。可用于粗选、精选、扫选等不同作业，选别粗砂(2-0.5mm)、细砂(0.5-0.074mm)、矿泥(-0.074)等不同粒级。也可用于选别铁、锰矿石和煤。当处理钨、锡等矿石时，摇床的有效回收粒度范围为 2-0.22 毫米。



6S Shaking table is one kind of main equipment of gravity concentration, which is be widely used in minerals separation of tungsten, tin, tantalum, niobium, gold and other rare metals and precious metal ores. It is applied in different separations of rough concentration, elaborate concentration and scavenging concentration, which can process coarse sand (2-0.5mm), fine sand (0.5-0.074mm) and ore slurry(-0.074). It also can be used in processing iron, manganese ore and coal. The effective recycling granularity range of shaking table is 2-0.22 millimeters during processing tungsten, tin ores.



### 技术优势

6-S 摇床具有富矿比高，选别效率高，看管容易，便于调节冲程。在改变横向坡度和冲程时仍可保持床面运行平衡，弹簧放置在箱体内部，结构紧凑，且能一次得出最终精矿和最终尾矿。



### Technical Advantages

6 S shaking table is characterized by high rich ore ratio, high separating efficiency, easiness to take charge and convenient adjustment. Keep table surface operate balanced even though changing cross fall and stroke. The springs with compact structure are placed in the table. The final concentrated ore and gangue can be obtained once.



### 主要参数 Main Specifications

| Model and Specification         |                        | 6-S/LY         | 6-S/LY         | 6-S/LY         | LY           |
|---------------------------------|------------------------|----------------|----------------|----------------|--------------|
| Table Size(mm)                  |                        | 4520×1850×1560 | 3000×1620×1100 | 2100×1050×850  | 1100×500×430 |
| Selective area(m <sup>2</sup> ) |                        | 7.67           | 4.08           | 2              | 0.51         |
| Feed size(mm)                   | Coarse sand            | 1-2.5          | 0.6-1.5        | 0.4-0.8        | 0.1-0.2      |
|                                 | Fine sand              | 0.8-1.2        | 0.3-0.8        | 0.2-0.5        | 0.05-0.1     |
|                                 | Slurry                 | 0.3-0.6        | 0.2-0.4        | 0.1-0.2        | 0.03-0.05    |
| Water consumption(t/h)          |                        | 0.5~3.5        | 0.3~1.5        | 0.2~1          | 0.1~0.5      |
| Stroke(mm)                      |                        | 8~36           | 10~30          | 12~28          | 9~17         |
| Jig frequency(q/m)              |                        | 240~380        | 240~420        | 250~450        | 280~460      |
| Cross fall(°)                   |                        | 0°~5°          | 0°~8°          | 0°~10°         | 0°~10°       |
| Model                           | Power(kw)              | 1.1            | 1.1            | 1.1            | 0.55         |
|                                 | Revolving speed(r/min) | 1400           | 1400           | 1400           | 1400         |
| V-belt(mm)                      |                        | A-2000         | A-1033         | B-2007         | A-1245       |
| Overall Dimension (L*W*H)mm     |                        | 5630×1850×900  | 4075×1320×780  | 3040×1050×1020 | 1530×500×800 |
| Weight(kg)                      |                        | 650            | 550            | 350            | 150          |

Notes: The above technical parameters based on stationary type shaking table, are for your reference only.



## LL 型螺旋溜槽 LL Series Spiral Chute

螺旋溜槽是一种新型的重力选矿设备，适用于分选粒度4-0.02毫米细料的铁矿、钛铁矿、铬铁矿、硫铁矿、钨矿、锡矿、钽铌矿，砂金矿、锆英石、金红石、以及具有比重差异的其他有色金属、稀有金属和非金属矿物。

Spiral chute is a type of new gravity separation equipment, which is applicable to separate metallic minerals granularity between 4-0.02, Spiral chute is a type of new gravity separation equipment, which is applicable to separate metallic minerals granularity between 4—0.02, such as iron, ilmenite, chromite, pyrite, tungsten ore, tin ore, tantalum-niobium ore, gravel mine, zirconite and rutile as well as other nonferrous metals, rare metals and nonmetallic minerals with adequate gravity difference.



### 技术优势

1. 选矿稳定，分矿清楚，处理量大；
2. 效率高，选矿富集比高、回收率高，
3. 对给矿量和浓度、粒度、品位的波动适应性强
4. 安装简单，占地面积少，操作简易，
5. 玻璃钢材质，防潮、防锈、耐腐蚀，
6. 不需动力，无运转部件，无噪音等优点。

### Technical Advantages

1. Stable and clear mineral separation with large handling capacity;
2. High efficiency with higher concentration ratio and high recovery;
3. High adaptability of feeding capacity and the variability of concentration, granularity and grade;
4. Easy for installation with small floor space and simple operation;
5. Material quality material quality with features of moisture resistance, rust protection and corrosion resistance;
6. With advantages of non-powered, without moving parts and without noise, etc.

### 主要参数 Main Specifications

| Model                 | LL-2000    | LL-1500   | LL-1200    | LL-900     | LL-600     |            |
|-----------------------|------------|-----------|------------|------------|------------|------------|
| External Diameter(mm) | 2000       | 1500      | 1200       | 900        | 600        |            |
| Pitch(mm)             | 1200       | 720, 540  | 720, 540   | 540, 405   | 450, 360   |            |
| Cross Dip(°)          | 9°         | 9°        | 9°         | 9°         | 9°         |            |
| Spiral Quantity       | 1-3        | 1-4       | 1-4        | 1-4        | 1-3        |            |
| Max turns of Spiral   | 4          | 5         | 5          | 5          | 5          |            |
| Feed Size(mm)         | 4-0.04     | 0.8-0.037 | 0.3-0.03   | 0.3-0.03   | 0.2-0.02   |            |
| Feed Density (%)      | 20-45      | 25-50     | 25-55      | 25-55      | 25-55      |            |
| Capacity(t/h)         | 15-40      | 6-8       | 4-6        | 2-3        | 0.8-1.2    |            |
| Overall Dimension     | Length(mm) | 2300      | 1560       | 1360       | 1060       | 700        |
|                       | Width(mm)  | 2300      | 1560       | 1360       | 1060       | 700        |
|                       | Height(mm) | 6500      | 5230, 4360 | 5230, 4360 | 4000, 3325 | 2600, 2150 |
| Weight (kg)           | 1350       | 800       | 600        | 400        | 150        |            |

**Notes:** 1. The above technical parameters calculated based on max spiral quantity and max pitch. Specific data is just for reference.

2. The feed concentration (percentage) is not absolute amount.

3. Spiral chute is different from screw pitch and the total height of corresponding spiral chute is also different.

## NZ(S)型中心传动浓缩机 NZ (S) Center Driving Thickener

我公司生产的中心传动式浓缩机适合小规模的浓缩，直径一般都在 20m 以下。直径在 12m 以下的，一般采取手动提耙方式，直径在 12m 以上者，一般采用自动提耙方式。为了处理有腐蚀性的料浆，我公司还开发生产防腐蚀型的浓缩机。中心传动式浓缩机主要由浓缩池、耙架、传动装置、耙架提升装置、给料装置、卸料装置和信号安全装置等组成。



Our NZ(S) thickener is applicable for small scale thickening. The diameter of our NZ(S) series thickener is under 20m. The thickeners with a diameter less than 12m is of manual handle type, and thickeners with a diameter over 12m adopt electric handle device. In order to deal with corrosive slurry, we also develop the anti-corrosive type thickener. The center drive thickener is mainly consist of thickener tank, rake, rake drive, rake lift, feeder, discharge cone, overload indicating or alarming device and etc.

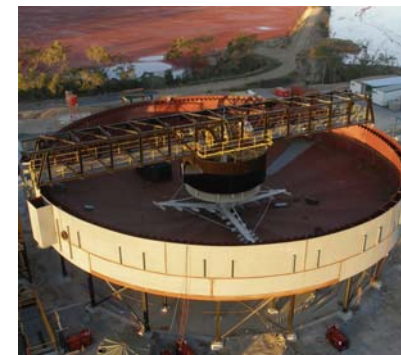


### 产品特点

- 1 操作简单，可靠性强
- 2 不易磨损，使用寿命长
- 3 结构简单，维修方便

### Features

- 1 Easy to operate, high dependability
- 2 not easy to wear and scrape, long service life
- 3 simple structure and convenient maintenance



### 主要参数 Main Specifications

| Model  | Tank Spec |         | Sediment area (m <sup>2</sup> ) | Rotary Speed (r/min) | Capacity (t/d) | Transmission Power (Kw) | Speed (r/min) | Dimension (L*W*H) (mm) | Weight (t) |
|--------|-----------|---------|---------------------------------|----------------------|----------------|-------------------------|---------------|------------------------|------------|
|        | Dia (m)   | Dep (m) |                                 |                      |                |                         |               |                        |            |
| NZ-1.8 | 1.8       | 1.8     | 2.55                            | 0.5                  | 1.3~5.6        | 1.1                     | 910           | 2000*1960*2900         | 1.49       |
| NZ-3.6 | 3.6       | 1.8     | 10.2                            | 0.4                  | 5~24           | 1.1                     | 910           | 3917*3787*3194         | 2.88       |
| NZ-6   | 6         | 3       | 28                              | 0.3                  | 14~62          | 1.1                     | 1430          | 6170*5170*5153         | 8.58       |
| NZ-9   | 9         | 3       | 63.5                            | 0.26                 | 32~150         | 3                       | 960           | 10000*10000*5337       | 5.37       |
| NZ-12  | 12        | 3.5     | 113                             | 0.19                 | ≤250           | 3                       | 960           | 15500*12000*6625       | 8.90       |
| NZ-15  | 15        | 3.6     | 176                             | 0.113                | ≤390           | 5.5                     | 940           | 17240*16000*7500       | 10.6       |
| NZ-18  | 18        | 3.6     | 250                             | 0.1                  | ≤552           | 5.5                     | 940           | 19700*18860*7650       | 12.4       |

备注：1 对于有腐蚀性料浆，有防腐型浓缩机，需特别订货。

2.考虑运输、施工工期等因素，根据用户要求，用户需注明是否带有浓缩池。

### Notes:

1 For corrosive feed pulp, an anticorrosive thickener is available, which shall require a special order.

2 Considering the factors like transportation and construction period, the customer shall specify whether the thickener requires a thickening tank or not.

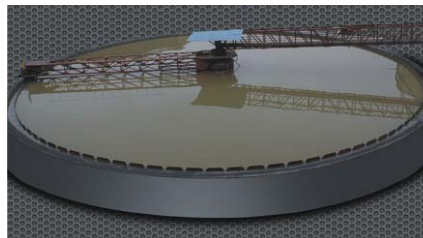
## NG 型周边传动浓缩机 NG Peripheral Traction Thickener

我公司生产的周边传动浓缩机，一般直径为15~53m。主要用辊轮传动式和齿轮传动式两类。周边传动式浓缩机规格较大，适用于处理量较大的场合，主要用于选矿厂精矿的浓缩和尾矿的脱水，可广泛用于煤炭、化工、建材以及水源和无数处理工业中含固体颗粒液体的浓缩和净化。

Our thickener is applicable for dewatering headings and tailing in the separation plant. It can improve the ore pulp from 20~30% to approx. 40~70%. The thickener is widely applied to the industries such as metallurgical, chemical industry, coal, non-ferrous metal ore dressing, and environmental protection.

### 产品特点

1. NG 型浓缩机为辊轮式周边传动浓缩机，大型浓缩机一般采用此类周边传动，过载时辊轮打滑，不需要特别安全装置，池子一般为混凝土结构。
2. 为了给电机充电，在中心支柱上装有环形节点，而设环滑动的集电接口则与耙架连接，并由敷设在耙架上的电缆，将电流从这些接口引入电机。



### Features

1. NG thickener is a kind of peripheral traction thickener of running roller type. Large-scale thickener usually adopts such type of peripheral traction. In the event of skidding of running roller due to overloading, no special safety device is required. Its tank is usually made of concrete.
2. In order to charge the motor, annular nodes are arranged on the central support. The current collection joints with sliding ring are connected with the arm brace, and the current is introduced to the motor through these joints by the cable laid on the arm brace.



### 主要参数 Main Specifications

| Model | Thickening tank diameter(mm) | Thickening tank depth (mm) | Capacity (t/h) | Sediment area(m <sup>2</sup> ) | Motor power (kW) | weight (t) |
|-------|------------------------------|----------------------------|----------------|--------------------------------|------------------|------------|
| NG-15 | 15000                        | 3500                       | 390            | 177                            | 5.5              | 9.12       |
| NG-18 | 18000                        | 3500                       | 560            | 255                            | 5.5              | 10.56      |
| NG-24 | 24000                        | 3400                       | 1000           | 452                            | 7.5              | 24         |
| NG-30 | 30000                        | 3940                       | 1560           | 707                            | 7.5              | 26.42      |
| NG-45 | 45000                        | 5060                       | 2400           | 1590                           | 11               | 50.6       |

备注：1 辊轮摩擦力小，轨道结冰或超载时辊轮打滑，故不适用于寒冷结冰地区以及量大、浓度高的矿浆。2 不提供钢板池子  
Notes.

1 Since the frictional force of running roller is low, the running roller is liable to skid in the event of icing on the track or overloading. Therefore, it is not suitable to be used in cold area with the phenomenon of icing, or the ore pulp with large quantity or high concentration.

2 Tank made of steel plate is not provided.



## GX 型高效浓缩机 GX High-efficiency Thickener

我公司生产的 GX 系列高效浓缩机的结构与中心传动式浓缩机相似，其主要特点是在待浓缩的矿浆中添加一定量的絮凝剂，使矿浆中的矿粒形成絮团，加快其沉降速度，进而达到提高浓缩效率的目的。GX 型高效浓缩机，主要包括主机、絮凝剂配制与添加、自动控制等部分。

Our GX series high efficiency thickener is similar with our center drive thickener. Its main characteristic is adding the flocculant to the slurry that to be thickened. Thus the mineral grain in slurry will become into flocculation. The sedimentation velocity will be highly increased and the efficiency of the thickener will be improved.

GX series high efficiency thickener is composed of main equipments, flocculation maker and feeder, automatic control device and etc.



### 产品特点

- 1 低流浓度高。用于料浆处理，沉砂重量浓度可达 40% 以上。
- 2 处理能力大，占地面积小。处理相同体积和浓度的料浆所需沉降面积仅为普通型的 20% 左右。
- 3 溢流水质好。溢流水悬浮物含量小于 500mg/L，可作为循环用水。
- 4 可根据用户需要配备自动检测和控制系统。

### Product Feature

1. High underflow concentration. The settling concentrate can be above 40% .
2. High capacity, small occupation space. When processing same thickness and volume slurry, comparing with the traditional thickener, the GX thickener only takes 20% of the subsidence area.
3. Overflow water quality is quite good. The suspended matter of the overflow can be less than 500 mg/L. So it can be used as circulating water.
4. It can be equipped with automatic detection and control system.

### 主要参数 Main Specifications

| Model   | Inner diameter (mm) | Tank Height (mm) | Sediment area (m <sup>2</sup> ) | Rabble Speed (r.p.m) | Rabble lifting height (mm) | Driving motor power (kW) | Lifting motor power (kW) | Tank Weight (T) |
|---------|---------------------|------------------|---------------------------------|----------------------|----------------------------|--------------------------|--------------------------|-----------------|
| GX-3.6  | 3600                | 1700             | 10.2                            | 1.1                  | 200                        | 1.1                      | 0.8                      | 2.83            |
| GX-5.18 | 5182                | 2134             | 21                              | 0.8                  | 300                        | 4                        | 0.8                      | 5.34            |
| GX-7.5  | 7500                | 2800             | 44.1                            | 0.427                | 300                        | 5.5                      | 2.2                      | 10.26           |
| GX-9    | 9000                | 2800             | 63.6                            | 0.427                | 300                        | 5.5                      | 2.2                      | 15.98           |
| GX-12   | 12000               | 3600             | 110                             | 0.35                 | 300                        | 7.5                      | 2.2                      | 25.59           |
| GX-15   | 15000               | 4000             | 177                             | 0.15                 | 300                        | 7.5                      | 2.2                      | 36.05           |

备注：1. 在没有絮凝剂条件下单独使用性能优于普通浓缩机

2. 絮凝剂添加装置需单独订货

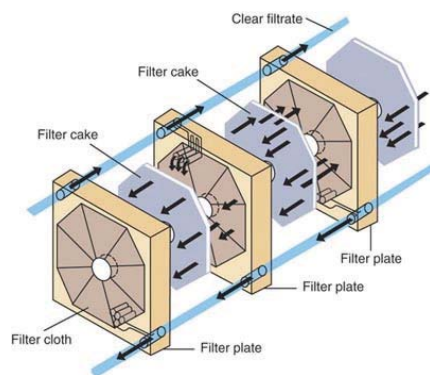
Note: 1 Its performance is better than that of common thickener if it is used separately without flocculent added.

2. The device for adding flocculent should be ordered separately.

## XAMY 箱式压滤机 XAMY Box Filters Press

我集团提供的 XAMY 系列厢式自动压滤机，可以应用于选矿，冶金，化工，建材等行业的脱水作业，同时也可以应用于污水处理及固液分离作业。

Our XAMY series filters are mainly used in chemical, pharmaceutical, metallurgy, oil, light industry, ferrous metallurgy, ore flotation, mining and other industries for solid-liquid suspension separation.



### 产品特点

1. 结构简单，设备占地少；
2. 过滤压力高，滤饼含水较低；
3. 回水利用率高
4. 过滤能力大
5. 易操作，故障少；

### Features

1. Simple structure, less cover area;
2. Higher pressure, lower cake moisture;
3. High utilization rate of return water
4. Bigger filtering capacity
5. Easy operating, less failure;

### 主要参数 Main Specifications

| Model          | Filter area (m <sup>2</sup> ) | plank size (mm) | plate thickness (mm) | Cake thickness (mm) | Filter chamber volume(L) | dimensions H×W×H (mm) | Weight (kg) |
|----------------|-------------------------------|-----------------|----------------------|---------------------|--------------------------|-----------------------|-------------|
| XAMY10/630-U   | 10                            | 630×630         | 60                   | 32                  | 171                      | 2550×900×1170         | 2           |
| XAMY12/630-U   | 12                            | 630×630         | 60                   | 32                  | 199                      | 2730×900×1170         | 2.2         |
| XAMY16/630-U   | 16                            | 630×630         | 60                   | 32                  | 266                      | 3150×900×1170         | 2.5         |
| XAMY20/630-U   | 20                            | 630×630         | 60                   | 32                  | 323                      | 3510×900×1170         | 2.8         |
| XAMY20/800-U   | 20                            | 800×800         | 60                   | 32                  | 334                      | 2950×1210×1260        | 3.1         |
| XAMY-25/800U   | 25                            | 800×800         | 60                   | 32                  | 417                      | 3250×1210×1260        | 3.3         |
| XAMY30/800-U   | 30                            | 800×800         | 60                   | 32                  | 501                      | 3550×1210×1260        | 3.5         |
| XAMY40/800-U   | 40                            | 800×800         | 60                   | 32                  | 668                      | 4150×1210×1260        | 3.9         |
| XAMY50/800-U   | 50                            | 800×800         | 60                   | 32                  | 851                      | 4750×1210×1260        | 4.3         |
| XAMY60/800-U   | 60                            | 800×800         | 60                   | 32                  | 1019                     | 5350×1210×1260        | 4.7         |
| XAMY70/800-U   | 70                            | 800×800         | 60                   | 32                  | 1185                     | 2950×1210×1260        | 5.1         |
| XAMY80/800-U   | 80                            | 800×800         | 60                   | 32                  | 1349                     | 6550×1210×1260        | 5.5         |
| XAMY40/900-U   | 40                            | 900×900         | 60                   | 32                  | 640                      | 3720×1310×1315        | 3.5         |
| XAMY50/900-U   | 50                            | 900×900         | 60                   | 32                  | 810                      | 4200×1310×1315        | 3.8         |
| XAMY60/900-U   | 60                            | 900×900         | 60                   | 32                  | 981                      | 4680×1310×1315        | 4.2         |
| XAMY70/900-U   | 70                            | 900×900         | 60                   | 32                  | 1152                     | 5160×1310×1315        | 4.4         |
| XAMY80/900-U   | 80                            | 900×900         | 60                   | 32                  | 1322                     | 5740×1310×1315        | 4.8         |
| XAMY90/900-U   | 90                            | 900×900         | 60                   | 32                  | 1493                     | 6220×1310×1315        | 5           |
| XAMY100/900-U  | 100                           | 900×900         | 60                   | 32                  | 1664                     | 6700×1310×1315        | 5.3         |
| XAMY50/1000-U  | 50                            | 1000×1000       | 60                   | 32                  | 830                      | 4020×1410×1460        | 5.1         |
| XAMY60/1000-U  | 60                            | 1000×1000       | 60                   | 32                  | 985                      | 4390×1410×1460        | 5.6         |
| XAMY70/1000-U  | 70                            | 1000×1000       | 60                   | 32                  | 1140                     | 4750×1410×1460        | 6           |
| XAMY-80/1000U  | 80                            | 1000×1000       | 60                   | 32                  | 1296                     | 5120×1410×1460        | 6.4         |
| XAMY90/1000-U  | 90                            | 1000×1000       | 60                   | 32                  | 1452                     | 5490×1410×1460        | 6.8         |
| XAMY100/1000-U | 100                           | 1000×1000       | 60                   | 32                  | 1607                     | 5850×1410×1460        | 7.2         |
| XAMY120/1000-U | 120                           | 1000×1000       | 60                   | 32                  | 1918                     | 6580×1410×1460        | 7.9         |
| XAMY140/1000-U | 140                           | 1000×1000       | 60                   | 32                  | 2229                     | 7320×1410×1460        | 8.8         |
| XAMY150/1000-U | 150                           | 1000×1000       | 60                   | 32                  | 2384                     | 7680×1410×1460        | 9.2         |
| XAMY80/1250-U  | 80                            | 1250×1250       | 65                   | 30                  | 1200                     | 4830×1750×1665        | 7.3         |
| XAMY100/1250-U | 100                           | 1250×1250       | 65                   | 30                  | 1560                     | 5350×1750×1665        | 7.8         |
| XAMY120/1250-U | 120                           | 1250×1250       | 65                   | 30                  | 1830                     | 5870×1750×1665        | 8.2         |
| XAMY150/1250-U | 150                           | 1250×1250       | 65                   | 30                  | 2310                     | 6520×1750×1665        | 9.3         |
| XAMY160/1250-U | 160                           | 1250×1250       | 65                   | 30                  | 2380                     | 6780×1750×1665        | 9.7         |
| XAMY200/1250-U | 200                           | 1250×1250       | 65                   | 30                  | 3020                     | 7820×1750×1665        | 11.1        |
| XAMY240/1250-U | 240                           | 1250×1250       | 65                   | 30                  | 3570                     | 8730×1750×1665        | 12.1        |
| XAMY250/1250-U | 250                           | 1250×1250       | 65                   | 30                  | 3730                     | 8990×1750×1665        | 12.4        |

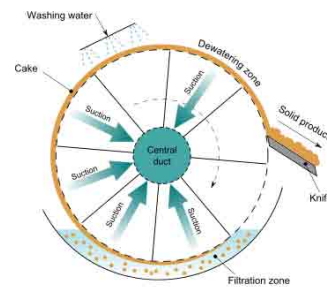
## ZPG 系列圆盘真空过滤机 ZPG Series Disk Vacuum Filter

ZPG 型盘式真空过滤机是利用真空作为过滤动力，使浆液进行固液分离的设备。是用于铁精矿，铜精矿，硫精矿，钛精矿以及其他有色金属精矿及非金属精矿过滤脱水及尾矿过滤脱水的优良过滤设备。

ZPG Series Disk Vacuum Filters are mainly used for solid-liquid separation by vacuum as the filtering power. It can be used as the ideal filter for iron concentrate, copper concentrate, sulfur concentrate, Ti concentrate and other non Ferrous Metal concentrate and nonmetal concentrate dewatering and tailing Dewatering.

### 主要参数 Main Specifications

|                                      |                                 |      |      |       |   |       |       |       |       |        |        |      |  |
|--------------------------------------|---------------------------------|------|------|-------|---|-------|-------|-------|-------|--------|--------|------|--|
| Filter area/m <sup>2</sup>           | 6                               | 9    | 12   | 15    | 20  | 30    | 40    | 60    | 72    | 96     | 120    |      |  |
| Diameter of filtering plate /mm      | 1700                            |      |      |       | 2100                                      |       |       |       | 3100  |        |        |      |  |
| Numbers of filtering plate           | 2                               | 3    | 4    | 5     | 4   | 6     | 8     | 5     | 6     | 8      | 10     |      |  |
| Numbers of the sectors               | 10                              |      |      |       | 12  |       |       |       | 20    |        |        |      |  |
| Speed of the filtering plate/(r/min) | 0~1(infinitely variable speeds) |      |      |       |   |       |       |       |       |        |        |      |  |
| Agitating speed/(r/min)              | 87(paddle)                      |      |      |       | 0~110(paddle, infinitely variable speeds) |       |       |       |       |        |        |      |  |
| Main power /kW                       | 2.2                             |      | 3    |       | 4   |       | 5.5   |       |       | 7.5    |        |      |  |
| Agitating power /kW                  | 3                               |      | 4    |       | 5.5                                       |       | 7.5   |       |       | 11     |        |      |  |
| Discharging method                   | reverse wind                    |      |      |       |   |       |       |       |       |        |        |      |  |
| Total Weight/t                       | 6                               | 7    | 8    | 9     | 11  | 12.5  | 14    | 19.3  | 20.5  | 23     | 25.5   |      |  |
| Dimension                            | Length/mm                       | 2392 | 2792 | 3192  | 3592                                      | 3292  | 4285  | 5085  | 4775  | 5275   | 6275   | 7275 |  |
|                                      | Width/mm                        | 2516 |      |       |   | 2852  |       |       |       | 4205   |        |      |  |
|                                      | Height/mm                       | 2120 |      |       |   | 2650  |       |       |       | 3560   |        |      |  |
| Capacity                             | 4~6                             | 6~9  | 8~12 | 10~15 | 15~20                                     | 22~30 | 30~40 | 45~70 | 50~90 | 60~120 | 80~150 |      |  |

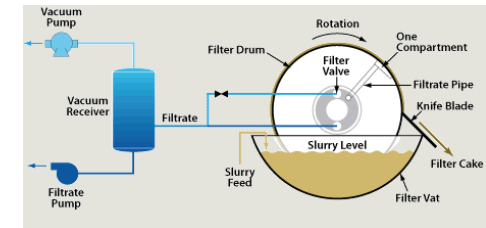


### 主要特点:

1. 占地面积小
2. 过滤系数高
3. 滤饼水分低
4. 工作可靠

### Main Features:

1. less cover area;
2. High filtration coefficient
3. Lower cake moisture
4. Working Reliably

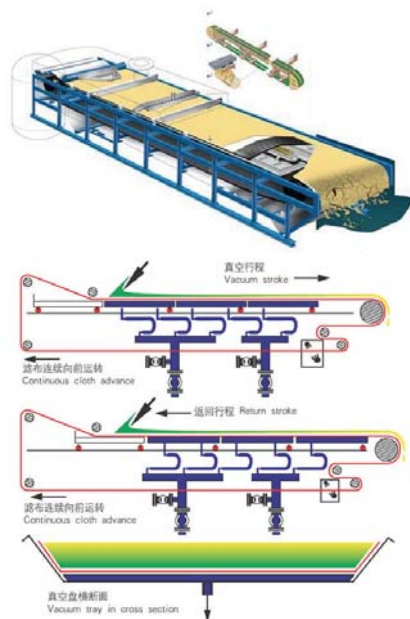




## ZDU 橡胶带式真空过滤机 ZDU Belt Vacuum Filter

ZDU 型橡胶带式真空过滤机是我厂在引进国外同类产品技术基础上，自主开发的一种高效过滤固液分离设备。可广泛应用于矿山、冶金、煤炭、石油、化工、造纸、制药及环保等行业。

On the basis of introducing foreign technology of the same kind products, ZDU rubber belt vacuum filter is a kind of highly efficient solid-liquid separating equipment through our research. It has been widely used in sectors, such as metallurgy, mining, coal, chemical engineering, paper making, food and environment protection.



### 技术特点

1. 可连续完成喂料过滤、滤饼洗涤、吸干、卸料等操作;
2. 控制系统应用 DCS 技术, 可实现现场和远程自动控制;
3. 整体结构模块化设计, 可灵活组装, 便于运输和安装
4. 生产效率高, 能耗低;
5. 滤布和输送胶带可自动张紧, 调偏;
6. 胶带采用波浪式围边及摩擦带保护, 使用寿命厂;

### Technology Advance

1. It in fact has realized continuous filtering, cake cleaning, residue unloading and filter fabrics cleaning;
2. The control system is taking DCS technology. So it can be controlled at working sites and remote automatic controlled.
3. It is flexible to assemble equipment because of the modular structure and convenient for the transportation and installation according to the field to adjust the Length and width.
4. Higher productive efficiency, lower power consumption.
5. With automatic tension and correct the deviation..
6. Rubber belt edge adopts undulation skirt-brim bonded on the parallel rubber belt with a longer life span.



橡胶带式真空过滤机

### 主要参数 Main Specifications

| Filter width(m)  |             | 1.3                           |            | 1.8                           |            | 2                             |            | 2.5                           |            | 3.2                           |            | 4                             |            | 4.5                           |            |
|------------------|-------------|-------------------------------|------------|-------------------------------|------------|-------------------------------|------------|-------------------------------|------------|-------------------------------|------------|-------------------------------|------------|-------------------------------|------------|
| Filter length(m) | N (integer) | Filter area (m <sup>2</sup> ) | Weight (T) | Filter area (m <sup>2</sup> ) | Weight (T) | Filter area (m <sup>2</sup> ) | Weight (T) | Filter area (m <sup>2</sup> ) | Weight (T) | Filter area (m <sup>2</sup> ) | Weight (T) | Filter area (m <sup>2</sup> ) | Weight (T) | Filter area (m <sup>2</sup> ) | Weight (T) |
| 8                | 3           | 10.4                          | 7.9        | 14.4                          | 10.4       | 16                            | 11.7       | 20                            | 14.6       |                               |            |                               |            |                               |            |
| 10               | 4           | 13                            | 8.9        | 18                            | 11.9       | 20                            | 13.4       | 25                            | 16.8       | 32                            | 27.6       |                               |            |                               |            |
| 12               | 5           | 15.6                          | 9.9        | 21.6                          | 13.4       | 24                            | 15.1       | 30                            | 19         | 38.4                          | 30         | 40                            | 42.4       | 54                            | 45         |
| 14               | 6           | 18.2                          | 10.9       | 25.2                          | 14.9       | 28                            | 16.8       | 35                            | 21.2       | 45                            | 32.4       | 56                            | 45         | 63                            | 47.9       |
| 16               | 7           | 20.8                          | 11.9       | 28.8                          | 16.4       | 32                            | 18.5       | 40                            | 23.4       | 51.2                          | 34.8       | 64                            | 47.6       | 72                            | 50.8       |
| 18               | 8           | 23.4                          | 12.9       | 32.4                          | 17.9       | 36                            | 20.2       | 45                            | 25.6       | 58                            | 37.2       | 72                            | 50.2       | 81                            | 53.7       |
| 20               | 9           | 26                            | 13.9       | 36                            | 19.4       | 40                            | 21.9       | 50                            | 27.8       | 64                            | 39.6       | 80                            | 52.8       | 90                            | 62         |
| 22               | 10          |                               |            | 39.6                          | 20.9       | 44                            | 23.6       | 55                            | 31         | 70.4                          | 42         | 88                            | 56.4       | 99                            | 65.2       |
| 24               | 11          |                               |            |                               |            | 48                            | 25.3       | 60                            | 33.2       | 77                            | 44.4       | 96                            | 59         | 108                           | 68.4       |
| 26               | 12          |                               |            |                               |            |                               |            | 65                            | 35.4       | 83.2                          | 46.8       | 104                           | 61.6       | 117                           | 71.6       |
| 28               | 13          |                               |            |                               |            |                               |            |                               |            | 89.6                          | 49.2       | 112                           | 64.2       | 126                           | 74.8       |
| 30               | 14          |                               |            |                               |            |                               |            |                               |            | 96                            | 51.6       | 120                           | 66.8       | 135                           | 78         |

## GYW 永磁真空过滤机 GYM Permanent Magnetic Vacuum Filter

GYW 型永磁真空过滤机专用于磁铁矿的铁精矿粉脱水，其给矿槽位于筒上部，筒体内部装有永久磁系，可使磁性颗粒迅速吸附到滤布表面。

Our GYM series Permanent magnetic vacuum filter is particularly used for magnetite concentrate dewatering. Its feeding chute is on the top of the drum. There is permanent magnetic material in the drum, so it can make the magnetic particles absorbed to the surface of the filtering cloth quickly.



### 产品特点

1. 精矿粒度分层效果明显，滤饼透气性好；
2. 具有磁搅拌作用，更利于脱水作业。
3. 生产效率高，运行成本低；

### Main Features

1. Better Granular Scalability, better air permeability of the filter cake;
2. With magnetic stirring function, it benefits for dewatering work
3. Higher productivity, lower operation cost



### 主要参数 Main Specifications

| Model  | Filter area (m <sup>2</sup> ) | Cylinder Specifications (mm) | Cylinder speed (r.p.m) | Magnetic Intensity (Mt) | Pressure on vacuum meter (Kpa) | Swept volume (m <sup>3</sup> /min.m <sup>2</sup> ) | Fan Pressure (Kpa) | Capacity (t/h) | Power (kw) | Weight (kg) |
|--------|-------------------------------|------------------------------|------------------------|-------------------------|--------------------------------|--|--------------------|----------------|------------|-------------|
| GYW-3  | 3                             | Φ1600×700                    | 0.5-2                  | 82                      | 60-80                          | 0.5-2  | 10~30              | 6.0-9          | 1.5        | 3270        |
| GYW-5  | 5                             | Φ2000×900                    | 0.5-2                  | 82                      | 60-80                          | 0.5-2  | 10~30              | 14-18          | 1.5        | 3940        |
| GYW-8  | 8                             | Φ2000×1400                   | 0.5-2                  | 82                      | 60-80                          | 0.5-2  | 10~30              | 22-43          | 1.5        | 4760        |
| GYW-12 | 12                            | Φ2000×2000                   | 0.5-2                  | 87                      | 60-80                          | 0.5-2  | 10~30              | 33-65          | 2.2        | 5400        |
| GYW-20 | 20                            | Φ2550×2650                   | 0.5-2                  | 87                      | 60-80                          | 0.5-2  | 10~30              | 50-100         | 4          | 6530        |

## SJ 型双叶轮浸出搅拌槽 (particular for gold mining) SJ Series Double-impeller Leaching Tank

SJ 型主要用于于金矿生产中氰化浸出及氰化厂污水处理, 也适用于冶金、化工等行业中的混合搅拌。用于炭浆流程、氰化工艺流程中, 炭浸槽需配套隔炭筛、提炭泵等其他辅助设备。

SJ Series double-impeller leaching tank is mainly used in cyanide leaching of gold producing and sewage treatment of cyanide factories. It is also used in metallurgy, chemical industry and light industry. In carbon slurry process and cyanide process, the leaching tank should work together with carbon screen, carbon lifter and other auxiliary equipment.



### 产品特点:

1. 结构合理, 传动效率高;
2. 空气分散均匀, 气泡小;
3. 叶轮衬胶, 转速低, 使用寿命长;
4. 叶轮直径大, 转速低, 功耗小, 减少了炭的磨损;
5. 搅拌强度适中, 矿浆浓度及细度分布基本一致, 可以提高氰化的浸出率和炭的吸附率。



### Product Advantages

1. Reasonable structure and high efficiency.
2. Large diameter impeller and low rotate speed lead to the low power and carbon consumption.
3. Air spread evenly; bubble size is small.
4. Impeller is lined with rubber; cycle speed is low; long service life.
5. Stirring intensity is proper, pulp density and fineness distribution are almost the same. Increase the cyanide leaching efficiency and carbon adsorption rate.



### 技术参数 Technical Specification

| Model       | DXH       | Volume         | Rotary Speed | Impeller | Feeding  | Discharge | Motor | Weight |
|-------------|-----------|----------------|--------------|----------|----------|-----------|-------|--------|
|             | mm        | m <sup>3</sup> | r/min        | mm       | mm       | mm        | kw    | T      |
| SJ2.5×2.5   | 2500×2500 | 6              | 65           | 909      | 2-Φ133   | 2-Φ133    | 2.2   | 2.8    |
| SJ2.5×3.15  | 2500×3150 | 13             | 57           | 935      | 2-Φ125   | 2-Φ125    | 2.2   | 3.12   |
| SJ3×3.15    | 3000×3150 | 18.93          | 51           | 1130     | 2-Φ150   | 2-Φ150    | 4     | 5.3    |
| SJ3.15×3.55 | 3150×3550 | 24             | 43           | 1260     | 2-Φ150   | 2-Φ150    | 4     | 5.5    |
| SJ3.5×3.5   | 3500×3500 | 29             | 46           | 1310     | 2-Φ150   | 2-Φ150    | 5.5   | 7.82   |
| SJ3.55×4.0  | 3500×4000 | 35             | 36.3         | 1310     | 2-Φ150   | 2-Φ150    | 4     | 6.6    |
| SJ4.0×4.5   | 4000×4500 | 50             | 33.5         | 1500     | 2-Φ150   | 2-Φ150    | 7.5   | 8.28   |
| SJ4.5×5.0   | 4500×5000 | 71.67          | 33.5         | 17500    | 2-Φ159×6 | 2-Φ159×6  | 7.5   | 10.8   |
| SJ5.0×5.6   | 5000×5600 | 98             | 31           | 1900     | 2-Φ159×8 | 2-Φ159×8  | 11    | 13.3   |
| SJ5.5×6.0   | 5500×6000 | 112            | 31           | 2100     | 2-Φ159×8 | 2-Φ159×8  | 11    | 18.7   |
| SJ6.0×6.0   | 6000×6000 | 135.7          | 29.4         | 2100     | 2-Φ168×8 | 2-Φ168×8  | 18.5  | 20.5   |
| SJ6.0×6.5   | 6000×6500 | 143            | 31.9         | 2100     | 2-Φ168×8 | 2-Φ168×8  | 11    | 22.3   |
| SJ7.5×8.0   | 7500×8000 | 268.6          | 21           | 2900     | 2-Φ159×8 | 2-Φ159×8  | 22    | 32.8   |
| SJ8.0×8.5   | 8000×8500 | 342            | 16.4         | 3200     | 2-Φ159×8 | 2-Φ159×8  | 22    | 42.5   |



## 解吸电解装置(particular for gold mining) Desorption & Electrolysis System

我公司提供的解吸电解装置是采用新技术、新工艺，应用于黄金生产中处理载金炭的新型、高效、产品。该系统对于黄金矿山炭浆厂和堆浸厂产出的载金炭都能很好的进行解吸，产出黄金。同时我公司可以提供与之相配套的湿法冶炼系统，包括反应釜，过滤器，吸收塔，真空系统，熔炼系统等。

Our desorption electrolysis unit is a new style high efficiency product integrated with new technique and technology that is used to process gold carrier carbon in gold production. This unit can perform outstanding desorption function for gold carrier carbon from gold mine carbon pulp plant and heap leaching plant so as to produce gold.

### 产品特点

- 1、解吸率高，可以提解金炭的吸附率
- 2、处理能力大，生产成本低
- 3、无氰解吸
- 4、贫炭不需要火法热再生
- 5、采用无损自动方式输送炭，在炭运输过程中不产生粉炭，不造成炭损失和金损失
- 6、自动化程度高，工人劳动强度低；在无氧环境下工作，工作环境好



### Product Features

1. High desorption rate,
2. High production capacity and low production cost
3. Cyanide free desorption
4. Barren carbon requires no dry heat re-generation
5. Carbon is conveyed by the automatic special non-destructive method. This conveyance process produces no powder carbon, carbon loss and gold loss.
6. High degree of automation reduces the labor intensity of workers; cyanide free environment presents good working environments.
7. We can also provide the matched wet type smelting system including reaction kettle, filter, absorber, vacuum system, smelting furnace.



### 技术参数 Technical Specification

| Model | Capacity of per batch | Capacity of per day |
|-------|-----------------------|---------------------|
|       | Kilogram / batch      | Kilogram / batch    |
| 5000  | 5000                  | 5000-7500           |
| 4000  | 4000                  | 4000-6000           |
| 3000  | 3000                  | 3000-4500           |
| 2000  | 2000                  | 2000-3000           |
| 1500  | 1500                  | 1500-2250           |
| 1000  | 1000                  | 1000-1500           |
| 800   | 800                   | 800-1200            |
| 500   | 500                   | 500-750             |
| 300   | 300                   | 300-450             |

氰化炭浆 CIL Leaching



浮选 Flotation



重选 Gravity Separation



堆浸 Dump Leaching





铁矿选矿方案  
Iron Ore Solutions

磁铁矿弱磁选 Magnetite by Low Magnetic Separation



赤铁矿反浮选 Hematite by Reverse Flotation Separation



赤铁矿重选 Hematite by Gravity Separation



赤铁矿强磁选 Hematite by Strong Magnetic Separation



铁矿选矿方案



钼矿浮选 Molybdenum Flotation Separation



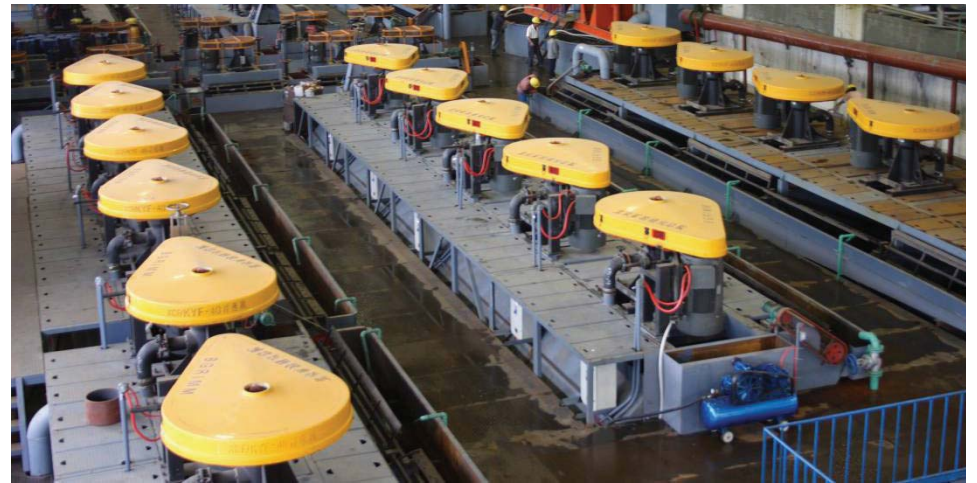
萤石矿浮选 Fluorite Flotation Separation



铜矿浮选 Copper Flotation Separation



铅锌矿浮选 Lead and Zinc Flotation Separation





其他矿物选矿方案  
Other Mineral Ore Solutions

锰矿重选

Manganese by Gravity Separation



锰矿强磁选

Manganese by Strong magnetic separation



重晶石重选

Barite by Gravity Separation



重晶石浮选

Barite by Flotation Separation



铬矿重选 Chromite by Gravity Separation



石墨矿浮选 Graphite Flotation Separation



铬矿强磁选 Chromite by Strong magnetic separation





Corporate Culture  
企业风采

